

BIRMINGHAM HISTORICAL SOCIETY

Newsletter

November 2000

ASPIRATION ATTAINED

"I've photographed a great many churches and synagogues all over the place," says acclaimed Houston-based photographer Richard Payne, "and I don't think I've seen a city the size of Birmingham with better quality religious architecture."

More than 100 of Payne's pictures of Birmingham churches and synagogues debut in *ASPIRATION-Birmingham's Historic Houses of Worship*, the newest of fine publications from the Birmingham Historical Society. Dr. John Schnorrenberg, UAB professor of art history, provides the narrative for the 96-page softbound coffee table volume.

"I am impressed with both the number of houses of worship and the quality of the architecture," continues Payne, who has also documented the complete worldwide works of noted architect, Philip Johnson. "I found them easy to photograph. My main purpose was to be clear about the building. The subject matter has to stand on its own—and, in Birmingham's case—it does."

Schnorrenberg is equally enthusiastic about Birmingham's stunning offerings. "It was a process of discovery and I'm pleased with what we found," says the leader of the popular annual Palm Sunday tour of sacred places. "We've discovered remarkable buildings that make us all aware how vast is the treasure in Birmingham—and many are unknown."

Not for long. The structures, most of which span the era from the city's early days through World War II, range geographically from downtown to the later suburbs. "The primary focus is looking at the great movement for church building here—the first era of energy is in the 1880s and 1890s with churches like Advent, First Methodist, and First Presbyterian. There's another energy and direction in the 1920s with Independent Presbyterian, East Lake Methodist and Ensley Baptist." Schnorrenberg adds that post-war churches "express a continuity of vigorous and imaginative" design.



The book is available for \$24.95 from area bookstores, historic sites, the Birmingham Public Library and from the Birmingham Historical Society, One Sloss Quarters, Birmingham, AL, 35222, 205-251-1880 (postpaid: \$29.95 in-state; out-of-state \$27.95) cash, checks, credit cards accepted.)

*First United Methodist Church of Birmingham, 1891. Meet here to begin the *Legendary Landmarks Tour* on November 19 at 2:30 p.m.*

SOCIETY CALENDAR

ASPIRATION Exhibition

64 photos by Richard Payne
Nov. 1-Dec. 31, 2000
Birmingham Public Library

ASPIRATION Exhibit Opening & Autograph Party

With Richard Payne
& John Schnorrenberg
Sunday, Nov. 12, 3:00-5:00 p.m.
Birmingham Public Library Gallery

Legendary Religious Landmarks Tour

Sunday, Nov. 19, 2:00-4:30 p.m.
Meet inside
First United Methodist Church
Sixth Avenue North
at Nineteenth Street.
Tour First Methodist,
Advent & the exhibit.
Leader: John Schnorrenberg.

Sacred Sites Across the City Bus Tour

Saturday, Dec. 30
9:00 a.m.-5:00 p.m.
Send \$35 to
Birmingham Historical Society.
Meet at
Birmingham Public Library.
Tour leader: John Schnorrenberg



One Sloss Quarters
Birmingham, Alabama 35222

Address Correction and Forwarding Requested

Non-Profit Org.
U.S. Postage
PAID
Permit 3825
Birmingham, AL

TITLE THAT TREASURE

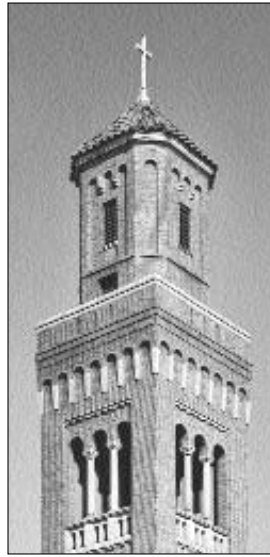
Identify the churches and synagogues below. All images are found in Birmingham Historical Society's *ASPIRATION* exhibit at the Birmingham Public Library, November 1-December 31, 2000. Photographs by Richard Payne.



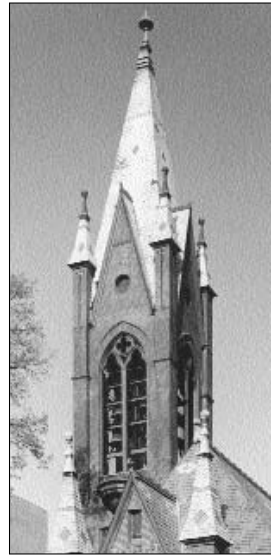
1. _____



2. _____



3. _____



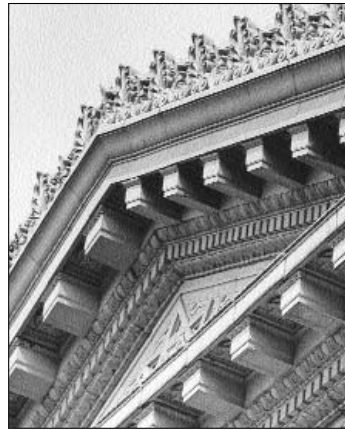
4. _____



5. _____



6. _____



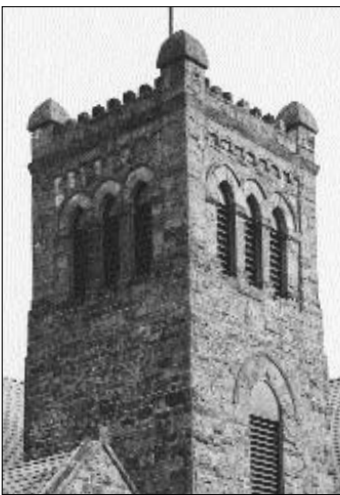
7. _____



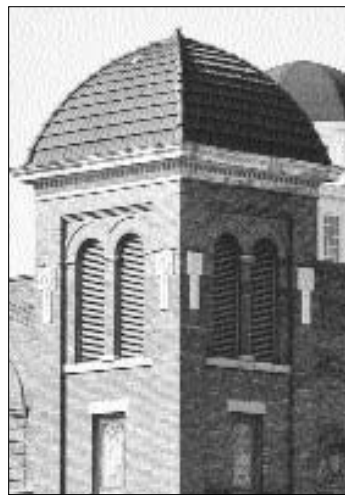
8. _____



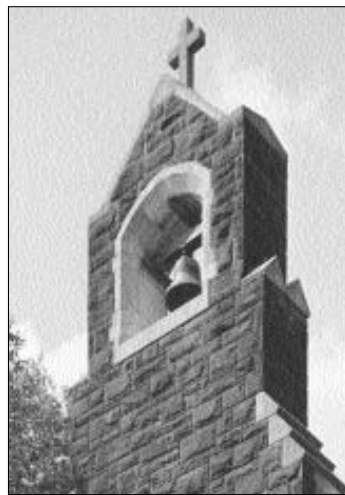
9. _____



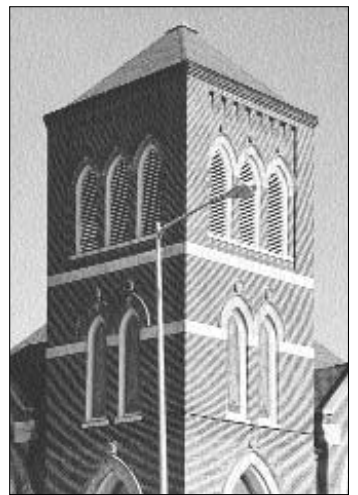
10. _____



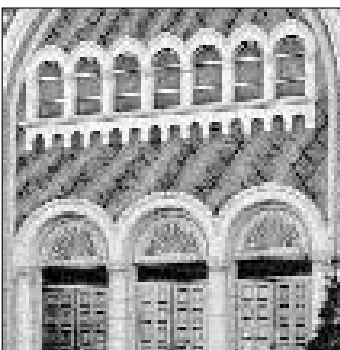
11. _____



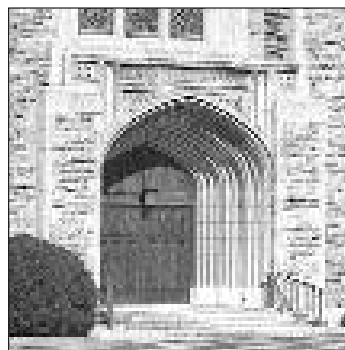
12. _____



13. _____



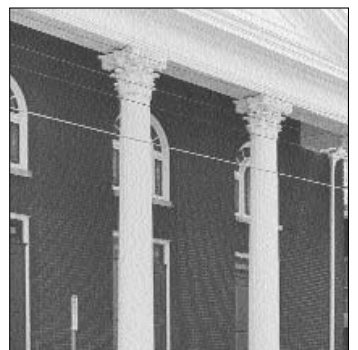
14. _____



15. _____



16. _____



17. _____